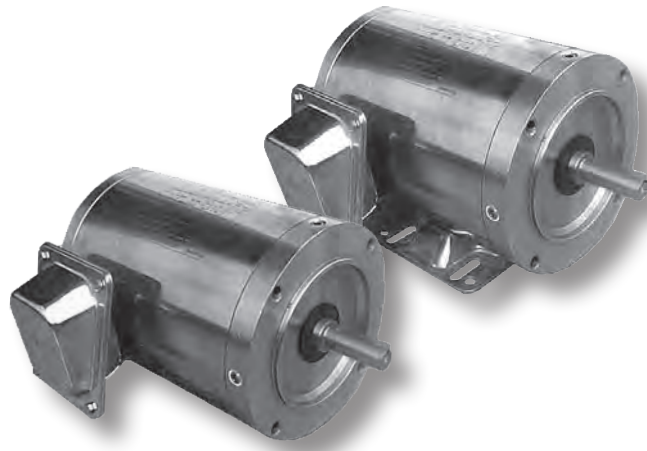


WORLDWIDE FRACTIONAL HP MOTORS

Stainless Steel / Washdown Duty Motors

TENV Enclosure ▪ C-Face ▪ Rigid Base and Round Body
Three-Phase ▪ 208-230/460 Volt



Product Overview

- 1/3 - 1 HP
- 1800 RPM
- 208-230/460 volt
- TENV enclosure
- 1.15 service factor
- Class F insulation
- C-face - rigid base and round body
- Double lip seals with an additional shaft slinger on the drive-end
- O-rings installed on endbells to eliminate moisture
- Pre-installed watertight, stainless cord connector
- Inverter duty
- Suitable for 50 hz operation with 1.0 service factor

Rigid Base

| HP | RPM | Voltage | Frame | Model Number | FL Amps (A) | FL Eff. (%) | Approx. Wt. (lbs.) | Notes |
|-----|------|-------------|-------|-----------------|-------------|-------------|--------------------|-------|
| 1/3 | 1800 | 208-230/460 | 56C | WSSNV13-18-56CB | 0.7 | 82.5 | 28 | |
| 1/2 | 1800 | 208-230/460 | 56C | WSSNV12-18-56CB | 0.8 | 82.5 | 31 | |
| 3/4 | 1800 | 208-230/460 | 56C | WSSNV34-18-56CB | 1.2 | 82.5 | 33 | |
| 1 | 1800 | 208-230/460 | 56C | WSSNV1-18-56CB | 1.6 | 84.0 | 36 | |

Round Body

| HP | RPM | Voltage | Frame | Model Number | FL Amps (A) | FL Eff. (%) | Approx. Wt. (lbs.) | Notes |
|-----|------|-------------|-------|------------------|-------------|-------------|--------------------|-------|
| 1/3 | 1800 | 208-230/460 | 56C | WSSNV13-18-56CRD | 0.7 | 82.5 | 28 | |
| 1/2 | 1800 | 208-230/460 | 56C | WSSNV12-18-56CRD | 0.8 | 82.5 | 31 | |
| 3/4 | 1800 | 208-230/460 | 56C | WSSNV34-18-56CRD | 1.2 | 82.5 | 33 | |
| 1 | 1800 | 208-230/460 | 56C | WSSNV1-18-56CRD | 1.6 | 84.0 | 36 | |